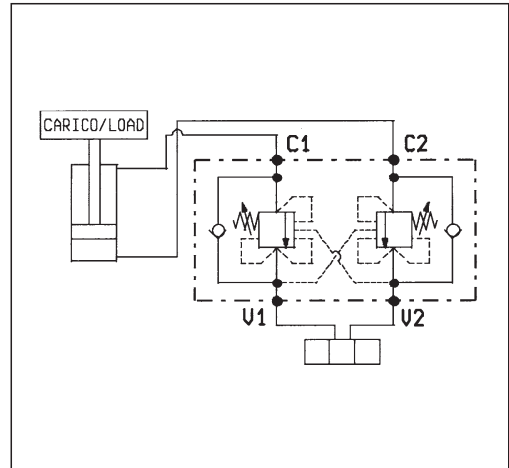
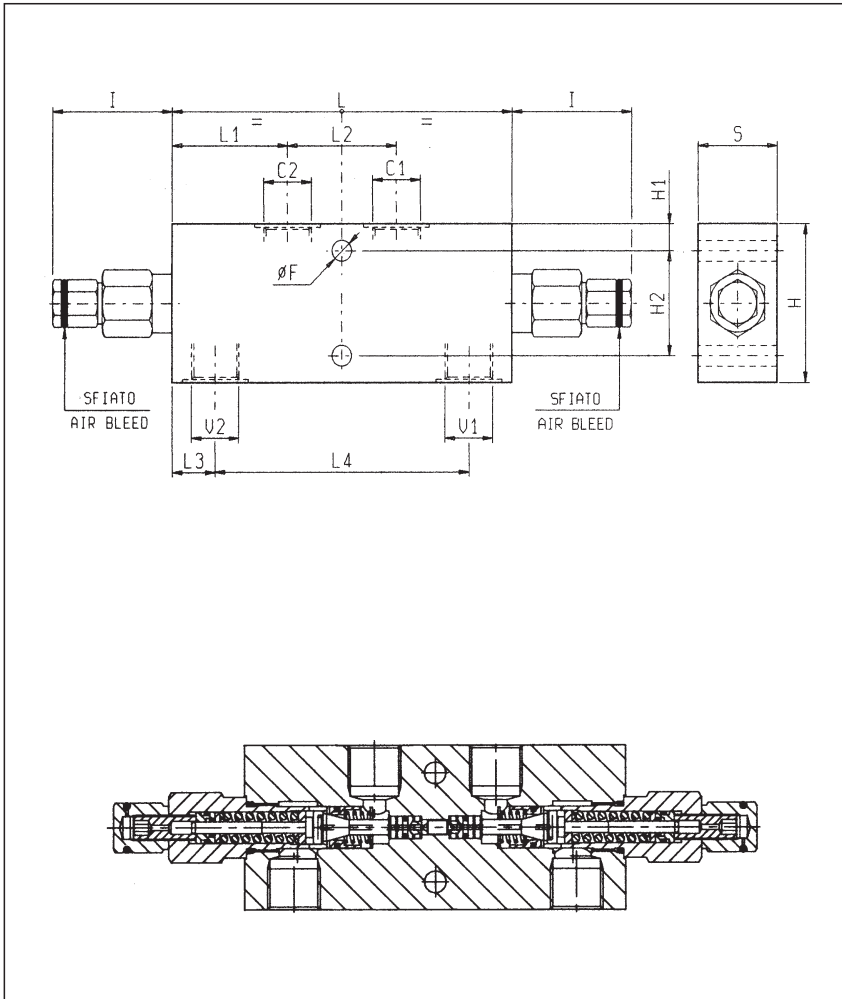




BILANCIAMENTO, DOPPIO EFFETTO, SERIE "30", VERSIONE "CC"
 DUAL PILOT ASSISTED, SERIES "30", "CC" TYPE OVERCENTRE

A-VBSO-DE-CC-30-CSL

08.44.04 - X - Y - Z



DATI TECNICI / TECHNICAL DATA

Pressione max. 350 bar
 Max. pressure

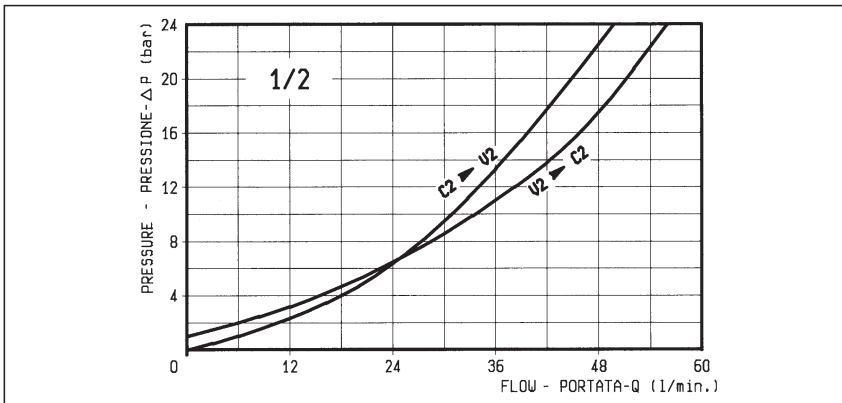
Portata max. vedi diagramma
 Flow see performance graph

Taratura della valvola: almeno 1.3 volte superiore alla pressione indotta dal carico
 Pressure setting: at least 1.3 times the load induced pressure

Cappello per piombatura Codice/Ordering code
 Sealing Cap 03.05.01.002

Collettore in acciaio
 Steel body

35	43	11	65	53	112	19.5	48	51.5	151	8.5							1/2	2.9	
30	38	8.5	55	53	112	19.5	48	51.5	151	8.5								3/8	2.5
S	H2	H1	H	I	L4	L3	L2	L1	L	F							Y	Peso kg Weight kg	



X	RAPPORTO DI PILOTAGGIO PILOT RATIO
03	4.2 : 1

Z	MOLLE / SPRINGS				
	Campo taratura min - max bar Adj. press. range bar	Incremento press. bar / giro vite Press. increase bar / turn	Taratura standard bar (Q = 5 l/min) Std. setting bar (made at = 5 l/min)	Cod. ordinazione Ordering code	Colore Colour
20	60-210	75	200	03.51.01.106	verde green
35	100-350	165	350	03.51.01.171	giallo yellow

Y	ATTACCHI / PORT SIZE	
	V1-V2-C1-C2	
02	G 3/8	
03	G 1/2	